

# Chokecherry and Sierra Madre

## Wind Energy Project

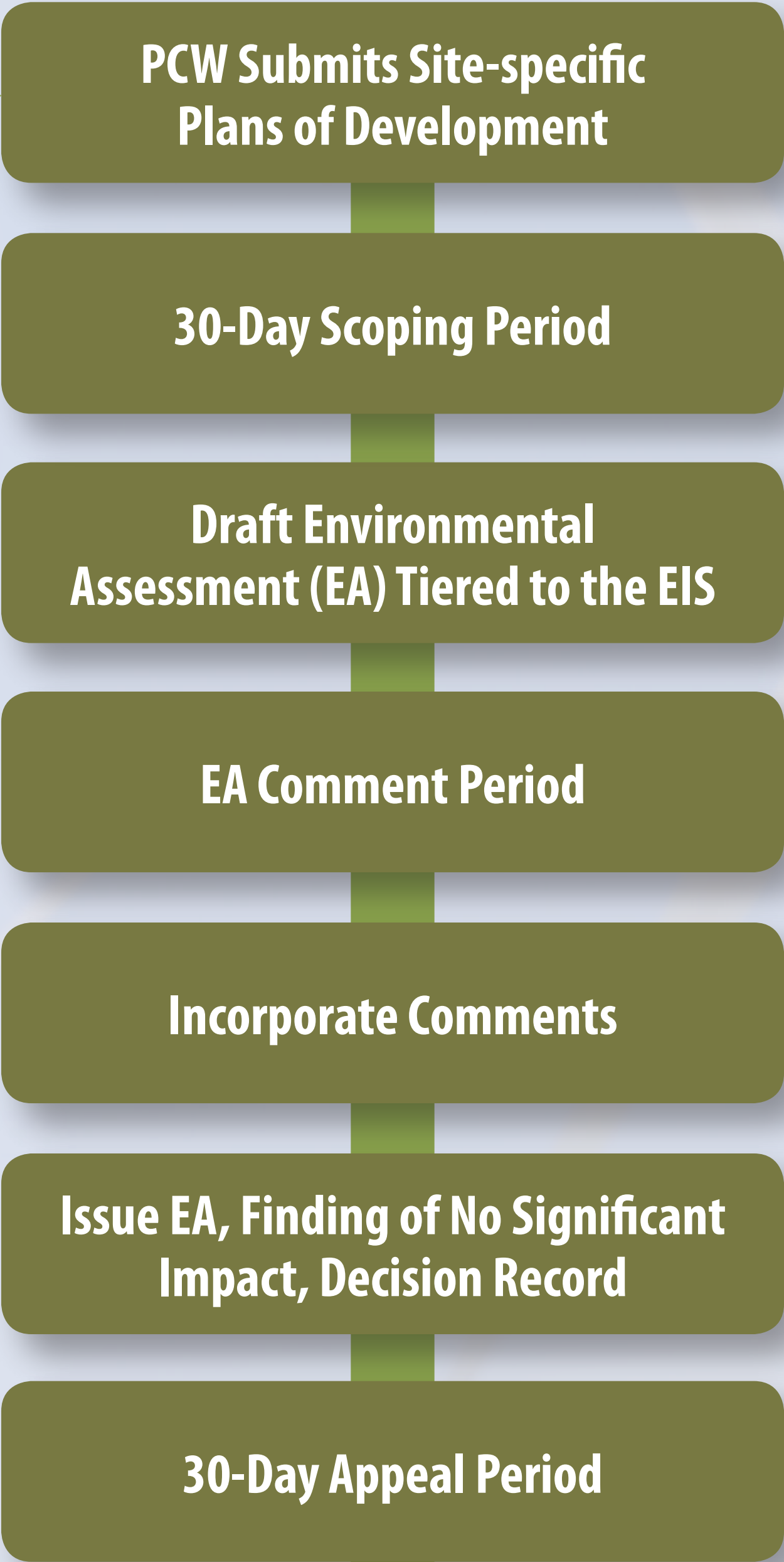
BLM

### National Environmental Policy Act Process (NEPA)

#### Environmental Impact Statement (EIS) (completed)



#### Site-specific NEPA Tiering Analysis (to be performed)



High Desert District–Rawlins Field Office, Wyoming





# Chokecherry and Sierra Madre

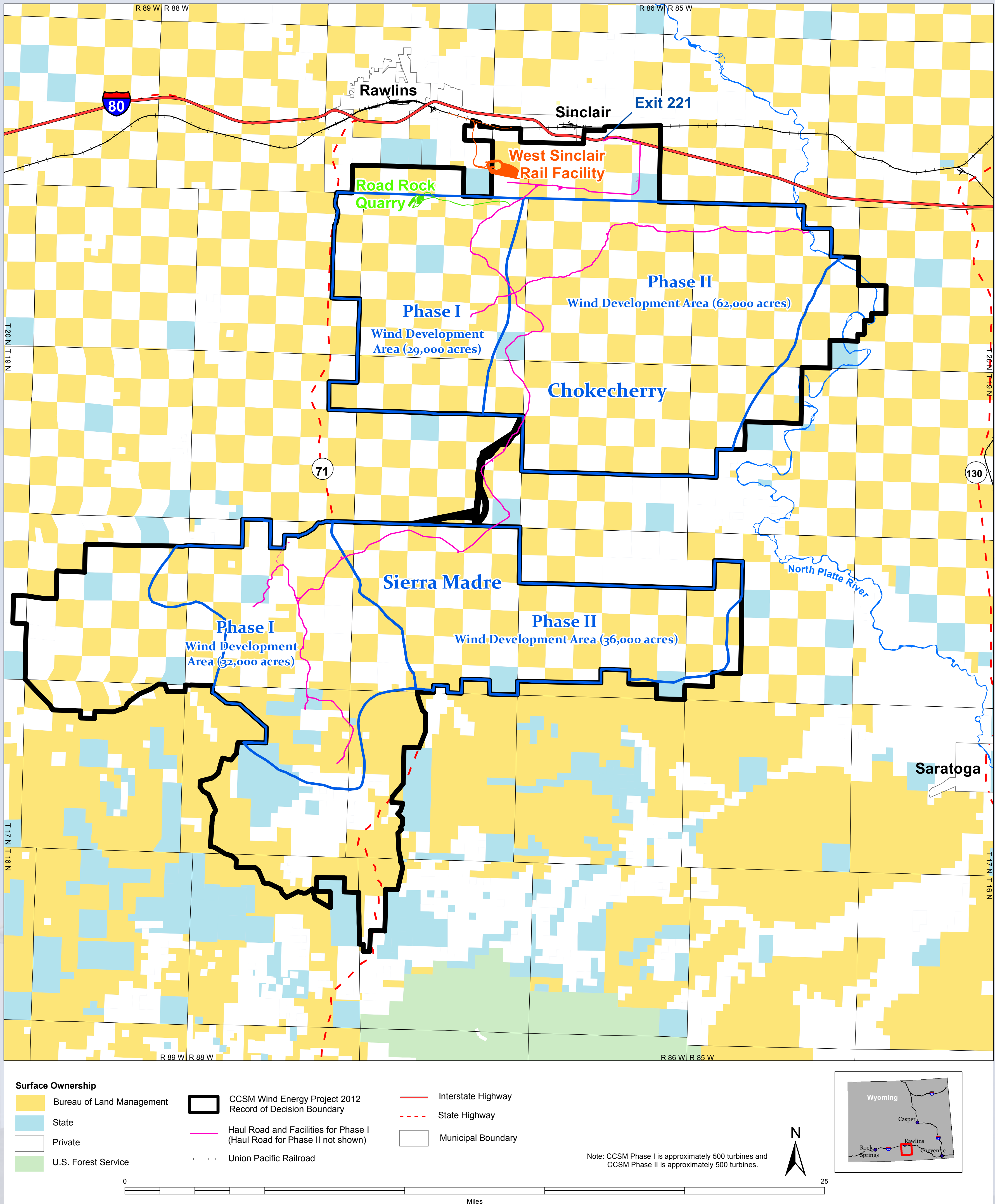
## Wind Energy Project

BLM

# Chokecherry and Sierra Madre

## Wind Energy Project (CCSM) Project

### Phases and Infrastructure



High Desert District–Rawlins Field Office, Wyoming





# Chokecherry and Sierra Madre

## Wind Energy Project

BLM

## Site-specific Environmental Assessment for Infrastructure Components

The Chokecherry and Sierra Madre Wind Energy Project (CCSM) Environmental Impact Statement (EIS) and Record of Decision amended the Rawlins Resource Management Plan to allow for wind development, but did not identify individual turbine or infrastructure component locations. Subsequent tiered environmental assessments (EAs) are needed to analyze site-specific issues. The first to be analyzed will be an infrastructure component EA which includes the Haul Road and Facilities for Phase I, West Sinclair Rail Facility, and Road Rock Quarry.

### Haul Road and Facilities for Phase I

- Haul Road (32 miles)
- Arterial and facility roads (25 miles)
- Five laydown yards
- Three water stations
- One water extraction facility

### West Sinclair Rail Facility

- Primary and secondary laydown yards
- 14 miles of rail track
- Access from Interstate 80, Exit 221, and the CCSM Project's Haul Road
- The West Sinclair Rail Facility would extend slightly beyond the CCSM EIS boundary

### Road Rock Quarry

- Provide construction materials for the CCSM Project
- 120 acres of operations area
- Quarry Road (five miles)
- Surface rock mining and processing
- The quarry was not included in the CCSM EIS

High Desert District–Rawlins Field Office, Wyoming

